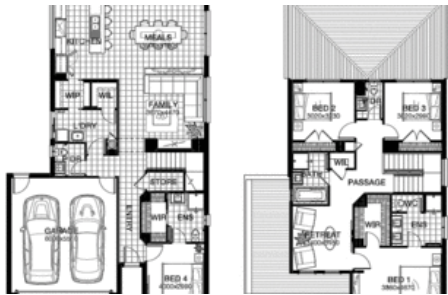




Truganina



## Truganina

Truganina is located 21 km west of Melbourne's CBD.

The estate is a brand new masterplanned residential community carefully designed to create a balanced, healthy and connected way of life that is full of possibilities.

Extensive roads and rail networks ensure you are never far from all of life's necessities, with thriving suburbs of Werribee, Point Cook, Williams Landing & Williamstown only a short drive away.

Tarneit station is only 1.4km away and future Truganina station will be built & will take you to Flinders station within 25 minutes. ( 100 m from the estate )

This thoughtfully designed landscaping's estate will create an oasis of tree-lined streets, flowing waterways and a grand sense of open space.

Spend your weekends exploring the extensive bike trails & enjoy time relaxing by the estate's plentiful creeks and wetlands, while enjoying a leisurely picnic with fresh produce sourced from the estate shopping centre.

Additionally a choice of highly sought after educational facilities, including Westbourne Grammar School, Truganina South Primary School & Thomas Carr College are also nearby to ensure your children are given the best start in life while your family's well being is taken care of with health services including Werribee Mercy Hospital and Westgate Medical Centre.

Please contact us for any further information.

4 3 2

<b>Price</b>	\$515,100
<b>Property Type</b>	residential
<b>Property ID</b>	41
<b>Land Area</b>	313 m2
<b>Floor Area</b>	248 m2

### Agent Details

Jeany Immanuel - 0410 089 477

### Office Details

Alexandria  
Suite 110 / 488 Botany Road  
Alexandria NSW 2015 Australia  
02 9341 5766



The above information provided has been furnished to us by the vendor/s. We have not verified whether or not that information is accurate and do not have any belief in one way or the other in its accuracy. We do not accept any responsibility to any person for its accuracy and do no more than pass it on. All interested parties should make and rely upon their own inquiries in order to determine whether or not this information is in fact accurate.